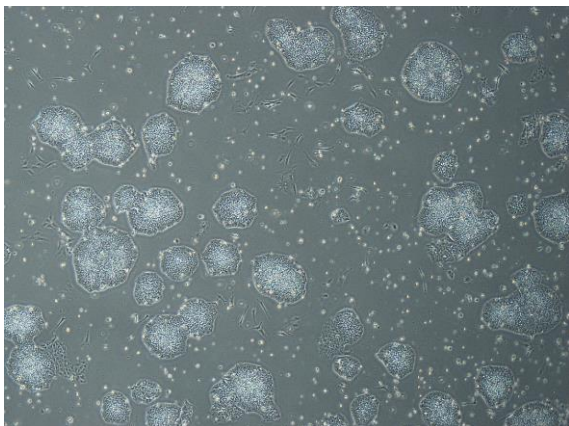
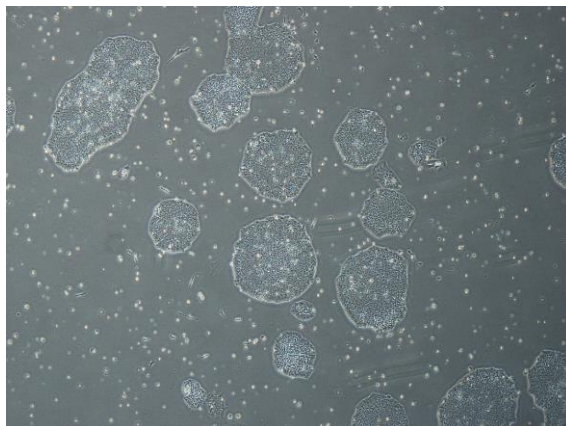


【 CiRA-j-1436 】 Morphology of iPSC colonies

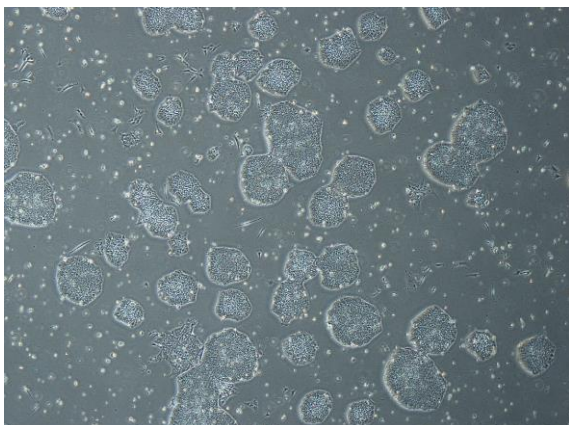
CiRA-j-1436-A: passage-3



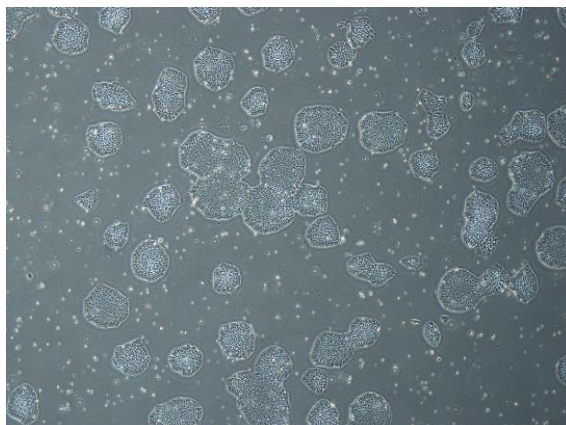
CiRA-j-1436-B: passage-3



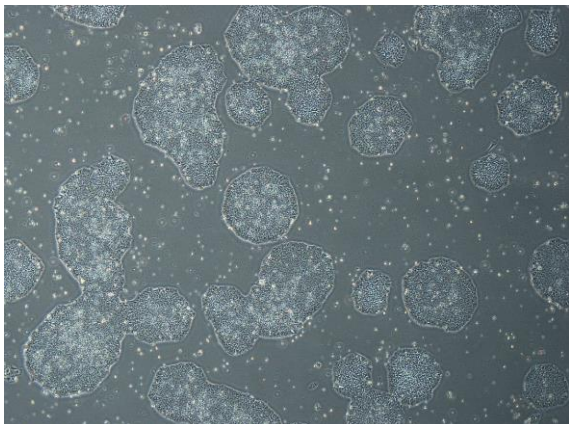
CiRA-j-1436-C: passage-3



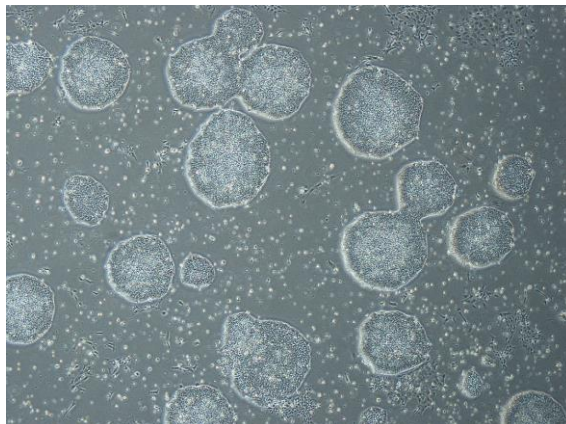
CiRA-j-1436-D: passage-3



CiRA-j-1436-E: passage-3



CiRA-j-1436-F: passage-3



(All images were captured at 4x magnification)